

Oversized Line-to-Lube Pressure Regulator Valve Kit

Part No.
36424-16K



- Pressure Regulator Valve
- Boost Valve Assembly
- Outer Spring
- O-Rings (3) 1 Extra

Patent No. 6,826,908

NOTE: Fits Ford E4OD and 4R100 with F1, F5, F8 and E9 stamped pump castings.

Tool Kit

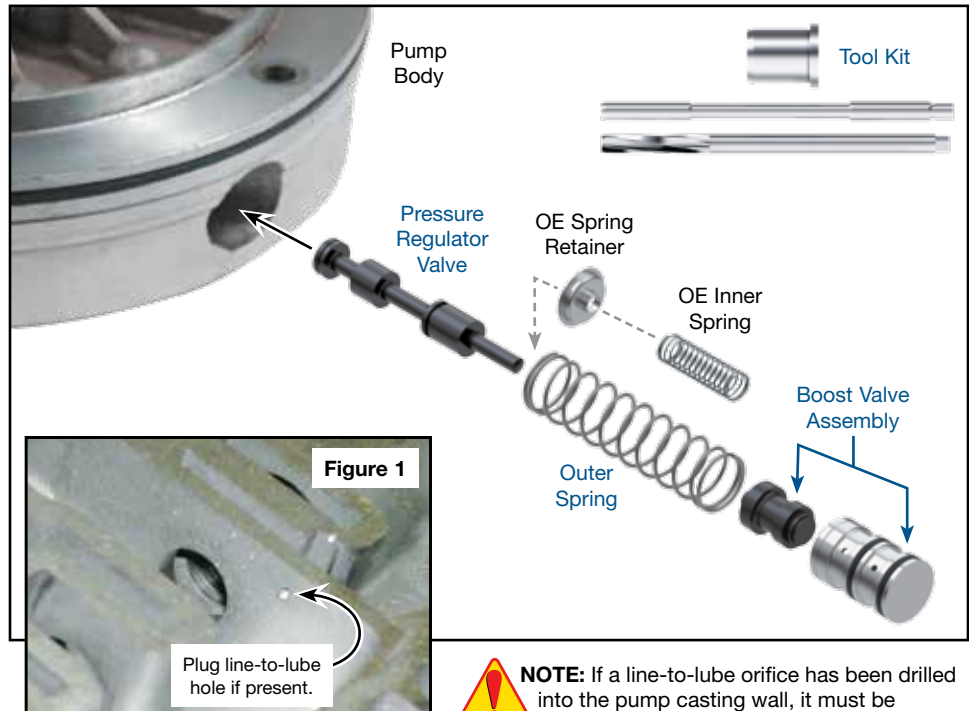
Part No.
F-36424-TL16C



- Carbide Reamer
- Reamer Jig
- Guide Pin

NOTE: Sonnax "F-Tool" kits designed to service a specific bore require the VB-FIX, a self-aligning valve body reaming fixture. More information and instructions can be found online at www.sonnax.com.

Ford E4OD, 4R100



NOTE: If a line-to-lube orifice has been drilled into the pump casting wall, it must be plugged (**Figure 1**).

1. Disassembly

- Remove and discard the OE boost valve assembly, outer (large) spring and pressure regulator valve.
- Remove and save the OE retainer clip, inner (small) spring and the spring retainer for reuse.

2. Bore Preparation

Ream pressure regulator bore (for reaming instructions/reamer care, please visit www.sonnax.com). Sonnax reaming tool kit **F-36424-TL16C** and **VB-FIX** are required for this operation.

3. Installation & Assembly

- Thoroughly clear bore valve bore and pump body of all debris.
- Install Sonnax pressure regulator valve.
- Reinstall OE spring retainer (large washer) and small inner spring.
- Install Sonnax large outer spring.
- Install O-rings on Sonnax boost sleeve. Lubricate and roll on clean bench to size O-rings into grooves.
- Install Sonnax boost valve/sleeve assembly and secure with OE retainer.